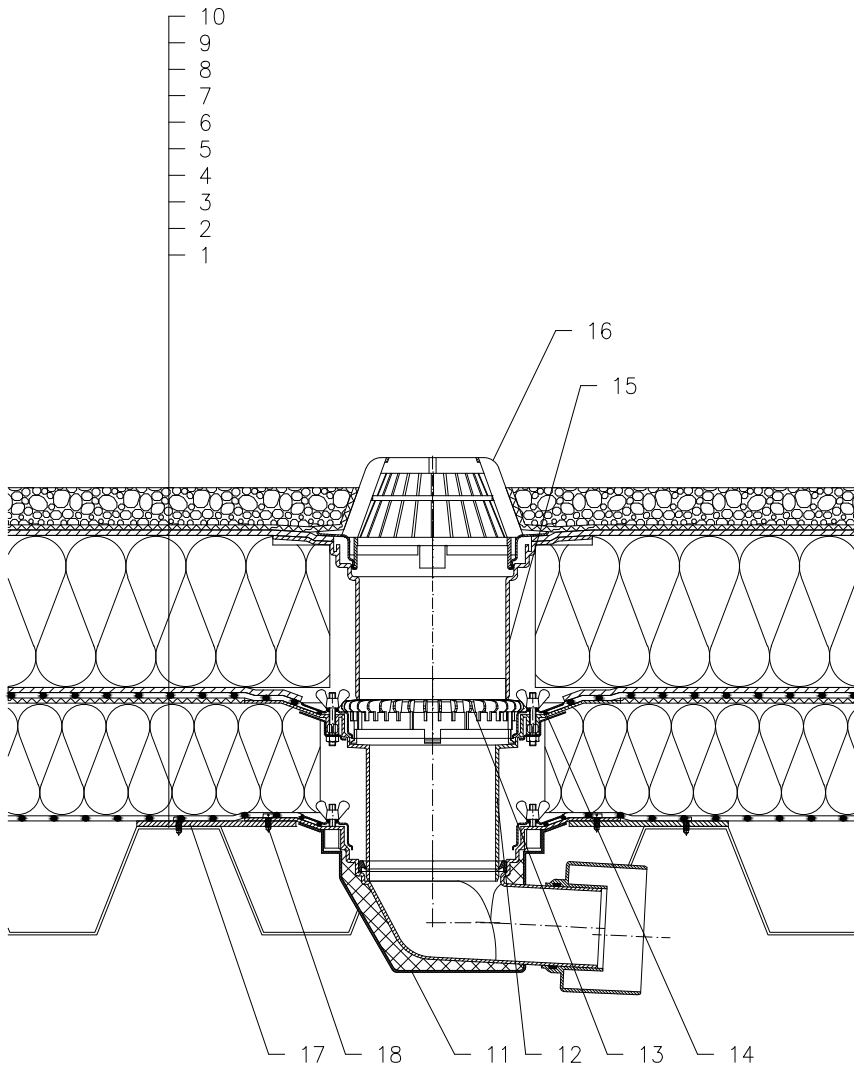


WARM ROOF – LOADED SYSTEM, COMBINED STRUCTURE, WITH MOISTURE STOP,  
 TRAPEZOIDAL PLATE SUPPORTING STRUCTURE, PLASTIC FOIL WATERPROOFING



- 1 TRAPEZOIDAL PLATE
- 2 MOISTURE STOP AND TEMPORARY SAFETY WATERPROOFING FROM PLASTIC FOIL
- 3 THERMAL INSULATION
- 4 DILATATION LAYER
- 5 PLASTIC FOIL WATERPROOFING LAID LOOSE
- 6 DRAINAGE LAYER
- 7 THERMAL INSULATION FROM XPS
- 8 DRAINAGE LAYER
- 9 FILTER LAYER
- 10 STABILIZING LAYER
- 11 FLAT-ROOF DRAIN HL64 WITH INSULATED DRAIN BODY, FLANGE AND STAINLESS STEEL CLAMPING RING, (FOR PVC SHEETINGS FLAT-ROOF DRAIN HL64P; FOR FPO SHEETINGS BASED ON PP FLAT-ROOF DRAIN HL64F)
- 12 EXTENSION HL65 WITH FLANGE, STAINLESS STEEL CLAMPING RING AND LIP SEAL, (FOR PVC SHEETINGS FLAT – EXTENSION HL65P; FOR FPO SHEETINGS BASED ON PP FLAT – EXTENSION HL65F)
- 13 GRAVEL GUARD HL160
- 14 SEALING PACKING (SEE DETAIL-ACCESSORIES)
- 15 EXTENSION HL350.0 WITH FLANGE AND WATERPROOFING KIT HL84.0
- 16 DOMED PLASTIC GRATE  $\varnothing 180$  mm (INCL. WITH HL64)
- 17 MOUNTING METAL PLATE
- 18 ANCHOR BOLT

NOTE:

FLAT-ROOF DRAIN HL64.1, (FOR PVC SHEETINGS FLAT-ROOF DRAIN HL64.1P; FOR FPO SHEETINGS BASED ON PP FLAT-ROOF DRAIN HL64.1F) HEATED (230V, 10-30 WATTS) CAN BE USED.

ASSEMBLY INLET: 260x380 MM

14122B