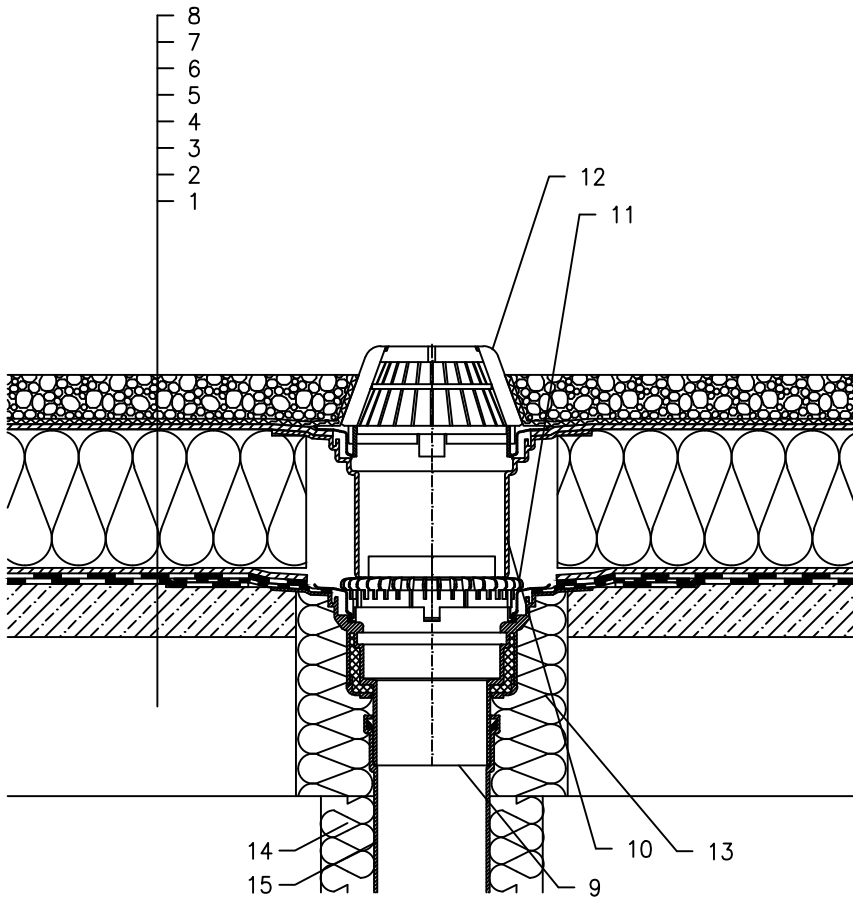


WARM ROOF – LOADED SYSTEM, REVERSE LAYER ORDER STRUCTURE  
BITUMEN SHEET WATERPROOFING



- 1 SUPPORT CONSTRUCTION
- 2 GRAVELY LAYER
- 3 BITUMEN SHEET WATERPROOFING NON-SOLID GLUED OR LAID LOOSE
- 4 DRAINAGE LAYER
- 5 THERMAL INSULATION FROM XPS
- 6 DRAINAGE LAYER
- 7 FILTER LAYER
- 8 STABILIZING LAYER
- 9 FLAT-ROOF DRAIN HL62H WITH INSULATED DRAIN BODY, WITH FACTORY WELDED BITUMEN MEMBRANE  $\varnothing$ 500 mm, THICKNESS 4 mm
- 10 EXTENSION HL350.0 WITH FLANGE AND WATERPROOFING KIT HL84.0
- 11 GRAVEL GUARD HL160
- 12 DOMED PLASTIC GRATE  $\varnothing$ 180 mm (INCL. WITH HL62H)
- 13 ASSEMBLY FOAM
- 14 DOWNPIPE THERMAL INSULATION
- 15 DOWNPIPE

NOTE:  
FLAT-ROOF DRAIN HL62.1H HEATED (230V, 10-30 WATTS) CAN BE USED.  
ASSEMBLY INLET:  $\varnothing$ 255 mm, OR 255 x 380 mm