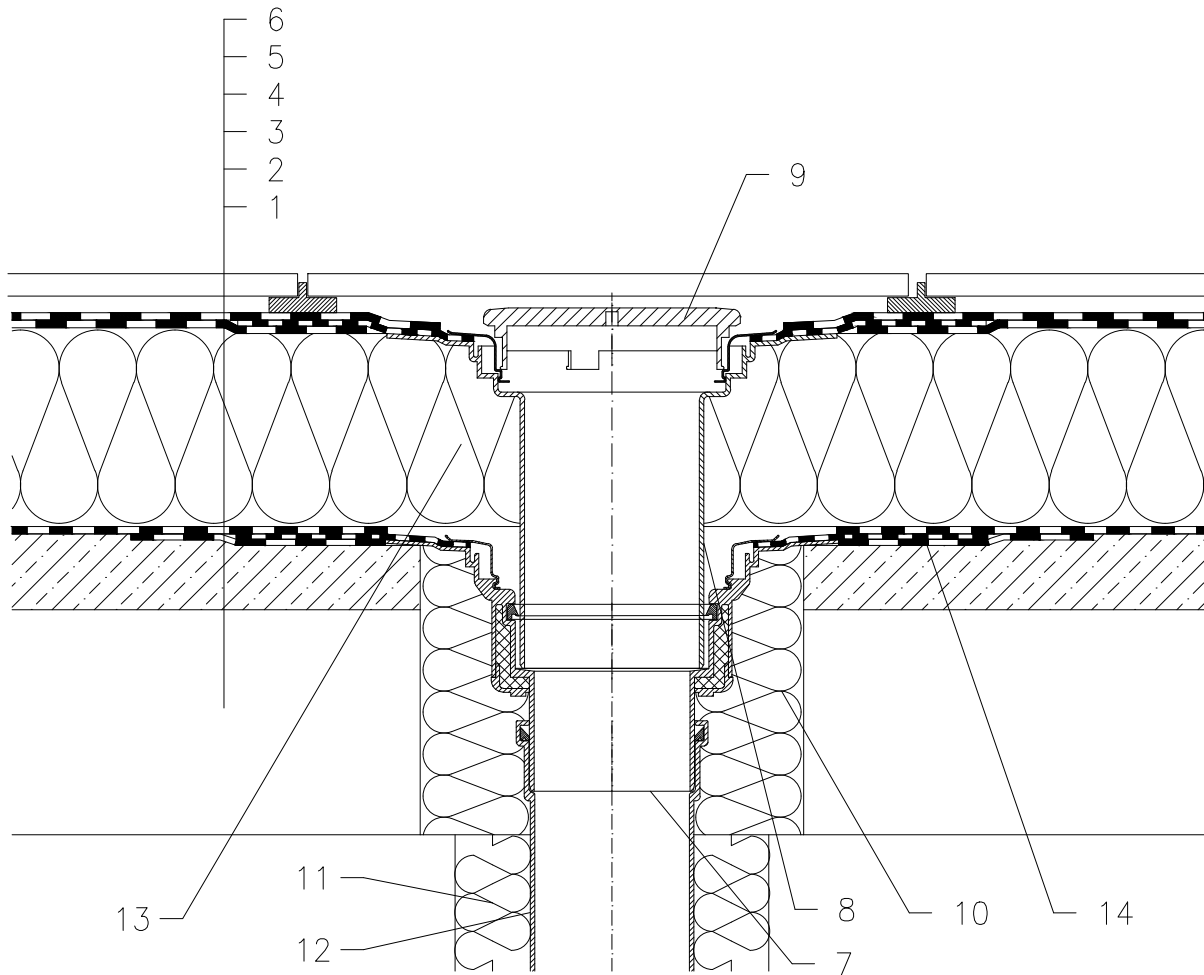


# WARM ROOF – WALKABLE, CLASSICAL STRUCTURE, BITUMEN SHEET WATERPROOFING PAVEMENT ON STANDS



- 1 SUPPORT CONSTRUCTION
- 2 GRAVITY LAYER
- 3 MOISTURE STOP AND TEMPORARY SAFETY WATERPROOFING FROM BITUMEN SHEET
- 4 THERMAL INSULATION
- 5 BITUMEN SHEET WATERPROOFING NON-SOLID GLUED OR LAID LOOSE
- 6 PAVEMENT ON STANDS
- 7 FLAT-ROOF DRAIN HL62H WITH INSULATED DRAIN BODY, WITH FACTORY WELDED BITUMEN MEMBRANE  $\varnothing$ 500 mm, THICKNESS 4 mm
- 8 EXTENSION HL65H WITH FLANGE AND FACTORY WELDED BITUMEN MEMBRANE  $\varnothing$ 500 mm, THICKNESS 4 mm
- 9 FLAT GRATE HL170
- 10 ASSEMBLY FOAM
- 11 DOWNPIPE THERMAL INSULATION
- 12 DOWNPIPE
- 13 FILL FREE SPACE WITH MINERAL WOOL
- 14 BITUMEN MEMBRANE,  $\varnothing$ 750 mm

**NOTE:**

FLAT-ROOF DRAIN HL62.1H HEATED (230V, 10-30 WATTS) CAN BE USED.

ASSEMBLY INLET:  $\varnothing$ 255 mm, OR 255 x 380 mm

122131A