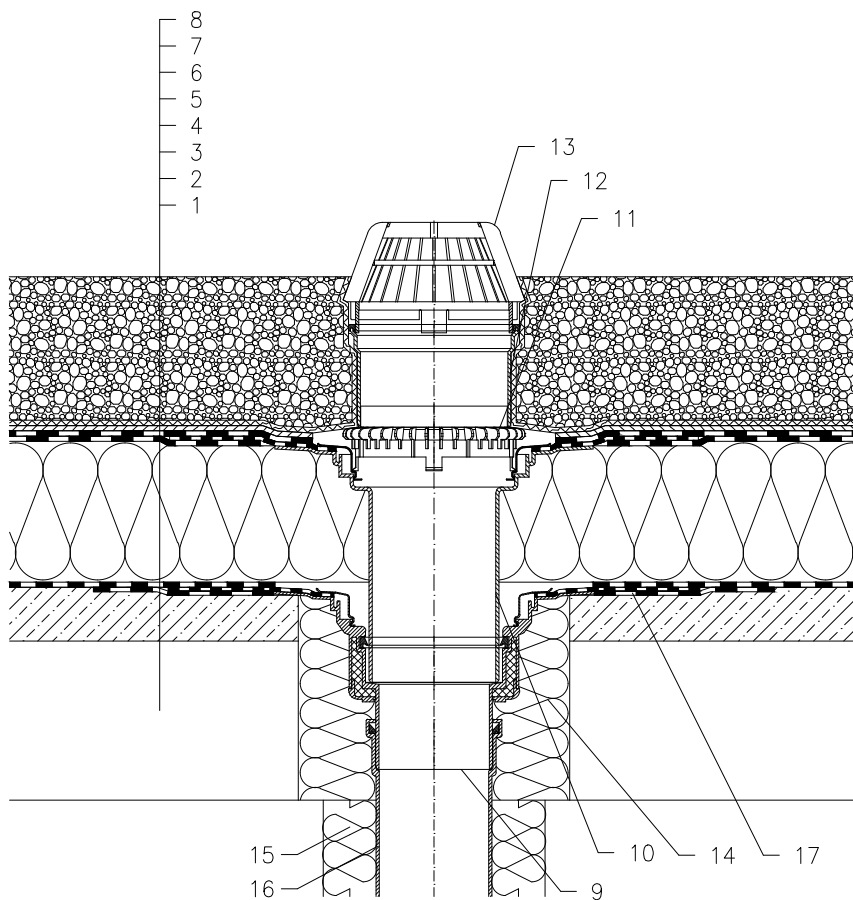


WARM ROOF – LOADED SYSTEM, CLASSICAL STRUCTURE, WITHOUT MOISTURE STOP,
CONCRETE SUPPORTING STRUCTURE, BITUMEN SHEET WATERPROOFING



- 1 SUPPORT CONSTRUCTION
- 2 GRAVELY LAYER
- 3 DILATATION LAYER AND TEMPORARY SAFETY WATERPROOFING FROM BITUMEN SHEET
- 4 THERMAL INSULATION
- 5 BITUMEN SHEET WATERPROOFING LAID LOOSE
- 6 DRAINAGE LAYER
- 7 FILTER LAYER
- 8 STABILIZING LAYER
- 9 FLAT-ROOF DRAIN HL62H WITH INSULATED DRAIN BODY, WITH FACTORY WELDED BITUMEN MEMBRANE $\varnothing 500$ mm, THICKNESS 4 mm
- 10 EXTENSION HL65H WITH FLANGE AND FACTORY WELDED BITUMEN MEMBRANE $\varnothing 500$ mm, THICKNESS 4 mm
- 11 GRAVEL GUARD HL160
- 12 EXTENSION HL350
- 13 DOMED PLASTIC GRATE $\varnothing 180$ mm (INCL. WITH HL62H)
- 14 ASSEMBLY FOAM
- 15 DOWNPIPE THERMAL INSULATION
- 16 DOWNPIPE
- 17 BITUMEN MEMBRANE, $\varnothing 750$ mm

NOTE:

FLAT-ROOF DRAIN HL62.1H HEATED (230V, 10-30 WATTS) CAN BE USED.

ASSEMBLY INLET: $\varnothing 255$ mm, OR 255x380 mm

121113