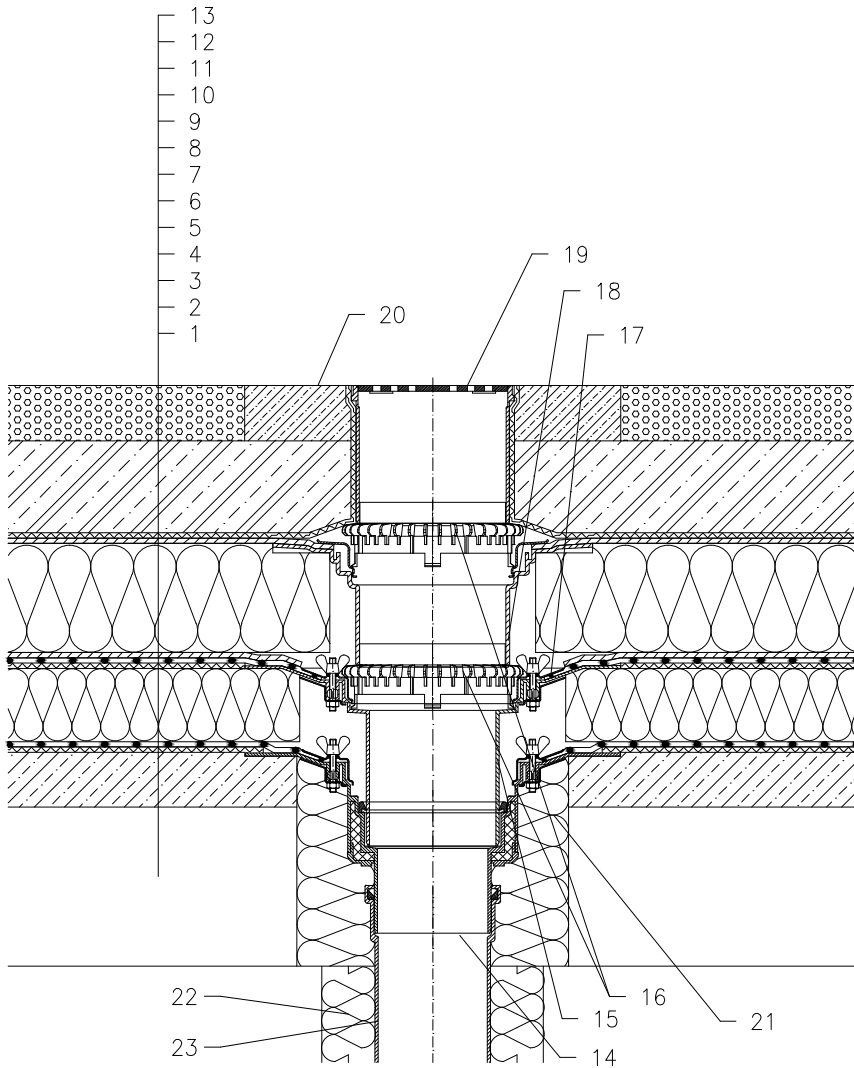


WARM ROOF – CAR PARK, COMBINED STRUCTURE, PLASTIC FOIL WATERPROOFING



- 1 SUPPORT CONSTRUCTION
- 2 GRAVITY LAYER
- 3 DILATATION LAYER
- 4 MOISTURE STOP AND TEMPORARY SAFETY WATERPROOFING FROM PLASTIC FOIL
- 5 THERMAL INSULATION
- 6 DILATATION LAYER
- 7 PLASTIC FOIL WATERPROOFING LAID LOOSE
- 8 DRAINAGE LAYER
- 9 THERMAL INSULATION FROM XPS
- 10 DRAINAGE LAYER
- 11 FILTER LAYER
- 12 REINFORCED CONCRETE SLAB
- 13 CAST ASPHALT
- 14 FLAT-ROOF DRAIN HL62 WITH INSULATED DRAIN BODY, FLANGE AND STAINLESS STEEL CLAMPING RING, (FOR PVC SHEETINGS FLAT-ROOF DRAIN HL62P; FOR FPO SHEETINGS BASED ON PP FLAT-ROOF DRAIN HL62F)
- 15 EXTENSION HL65 WITH FLANGE, STAINLESS STEEL CLAMPING RING AND LIP SEAL, (FOR PVC SHEETINGS FLAT – EXTENSION HL65P; FOR FPO SHEETINGS BASED ON PP FLAT – EXTENSION HL65F)
- 16 GRAVEL GUARD HL160
- 17 SEALING PACKING (SEE DETAIL-ACCESSORIES)
- 18 EXTENSION HL350.0 WITH FLANGE AND WATERPROOFING KIT HL84.0
- 19 GRATING HL66 (TRUNCATABLE) WITH STAINLESS STEEL FRAME AND SECURED STAINLESS STEEL GRATE, MAX. LOAD 1,5 t
- 20 CONCRETE BELT 1000 X 1000 X 100 mm
- 21 ASSEMBLY FOAM
- 22 DOWNPIPE THERMAL INSULATION
- 23 DOWNPIPE

NOTE:

FLAT-ROOF DRAIN HL62.1
 SHEETINGS FLAT-ROOF DRAIN HL62.1P; FOR FPO
 SHEETINGS BASED ON PP FLAT-ROOF DRAIN HL62.1F)
 HEATED (230V, 10-30 WATTS) CAN BE USED.

ASSEMBLY INLET: \varnothing 255 MM, ALTERNATIVELY 255X380 MM