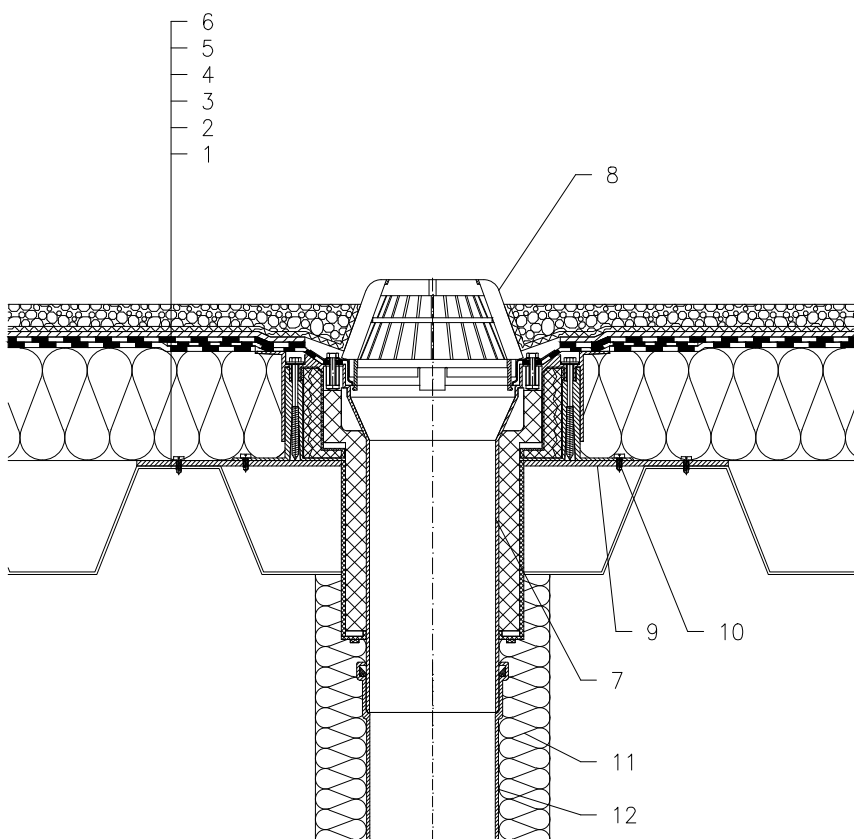


WARM ROOF – LOADED SYSTEM, CLASSICAL STRUCTURE, WITHOUT MOISTURE STOP,
 TRAPEZOIDAL PLATE SUPPORTING STRUCTURE, BITUMEN SHEET WATERPROOFING



- 1 TRAPEZOIDAL PLATE
- 2 THERMAL INSULATION
- 3 BITUMEN SHEET WATERPROOFING LAID LOOSE
- 4 DRAINAGE LAYER
- 5 FILTER LAYER
- 6 STABILIZING LAYER
- 7 FLAT-ROOF DRAIN HL63H DRAINBOX, WITH INSULATED DRAIN BODY, TELESCOPED OUTER-HOUSING FOR PRECISE ADJUSTMENTS TO INSULATIONS 100–160 mm, FACTORY WELDED BITUMEN MEMBRANE ϕ 500 mm, THICKNESS 4 mm
- 8 DOMED PLASTIC GRATE ϕ 180 mm (INCL. WITH HL63H)
- 9 MOUNTING METAL PLATE
- 10 ANCHOR BOLT
- 11 DOWNPIPE THERMAL INSULATION
- 12 DOWNPIPE

NOTE:

FLAT-ROOF DRAIN HL63.1H HEATED (230V, 10–30 WATTS) CAN BE USED.

ASSEMBLY INLET: ϕ 255 mm, OR 255 x 400 mm

121213A