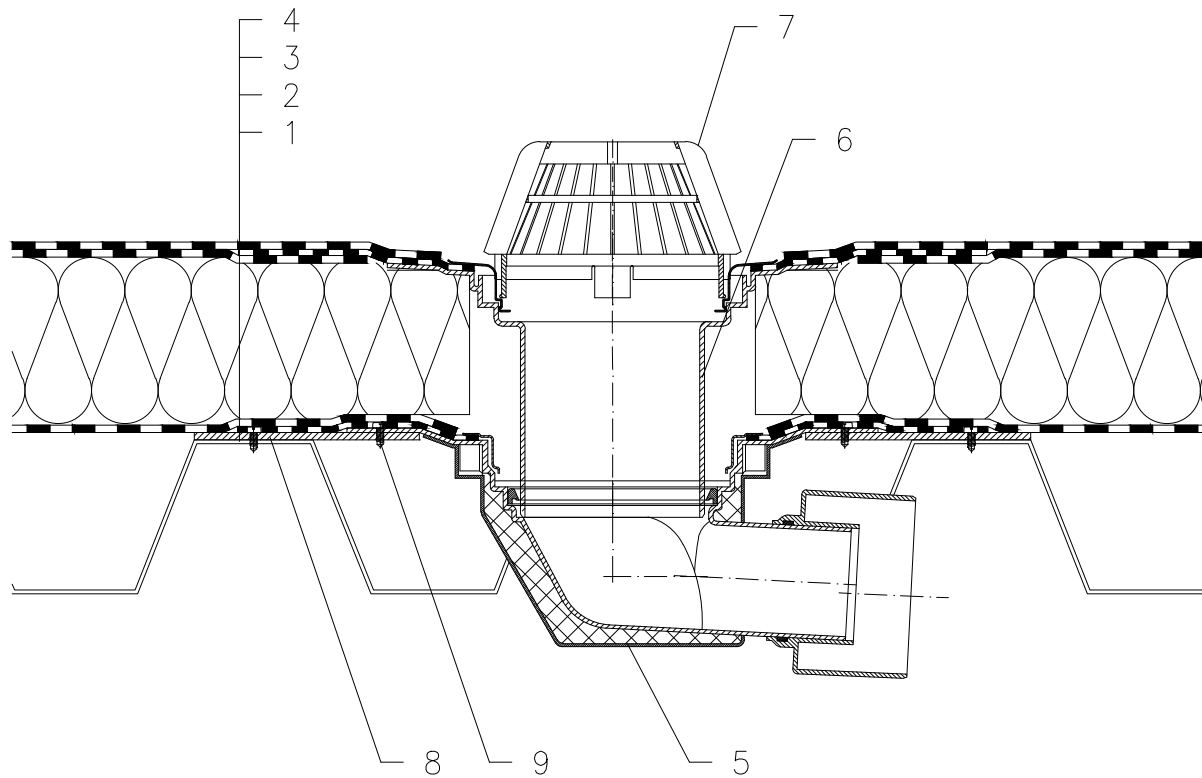


WARM ROOF – GLUED SYSTEM, CLASSICAL STRUCTURE, WITH MOISTURE STOP,
 TRAPEZOIDAL PLATE SUPPORTING STRUCTURE, BITUMEN SHEET WATERPROOFING



- 1 TRAPEZOIDAL PLATE
- 2 MOISTURE STOP AND TEMPORARY SAFETY WATERPROOFING FROM BITUMEN SHEET
- 3 THERMAL INSULATION
- 4 BITUMEN SHEET WATERPROOFING GLUED
- 5 FLAT-ROOF DRAIN HL64H WITH INSULATED DRAIN BODY, WITH FACTORY WELDED BITUMEN MEMBRANE $\varnothing 500$ mm, THICKNESS 4 mm
- 6 EXTENSION HL65H WITH FLANGE AND FACTORY WELDED BITUMEN MEMBRANE $\varnothing 500$ mm, THICKNESS 4 mm
- 7 DOMED PLASTIC GRATE $\varnothing 180$ mm (INCL. WITH HL64H)
- 8 MOUNTING METAL PLATE
- 9 ANCHOR BOLT

NOTE:

FLAT-ROOF DRAIN HL64.1H HEATED (230V, 10-30 WATTS) CAN BE USED.

ASSEMBLY INLET: 260 x 380 mm

121211B